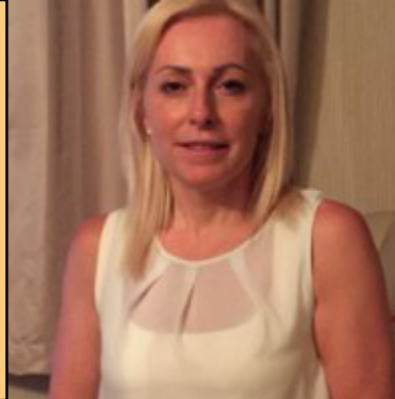


# DR. DAWN BAILHAM

MSc Forensic Psychology, DClinpsych (Doctorate in Clinical Psychology),  
BSc (Hons) Psychology, AFBPS, CAT Practitioner



A sign of Dr. Bailham's commitment to further develop her knowledge-base is evident in that she has also obtained the Cardiff University Bond Solon certificate in Criminal Law.

Offering her services as an Expert Witness for both the prosecution and defence, as a single or joint Expert, Dr. Bailham has attended court on numerous occasions to give expert evidence for cases relating to Family Law and more recently Criminal Law. Her key areas of interest are the development of personality disorders, post traumatic stress disorder, juvenile sex offending and applications of Cognitive Analytical Therapy (CAT).

"More recently I have been instructed by Local Authorities in pre-care proceeding cases to give my opinion in Child and Family cases particularly where there are child protection concerns," Dr. Bailham told us, "The value of this as an Expert has been to guide Local Authorities in terms of appropriate psychological interventions for parents to sometimes prevent care proceedings, as well as provide a psychological understanding of why issues within families have developed. This can assist professionals in understanding parenting concerns, their communication with parents, and to be more empathic about how parenting difficulties have arisen."

In criminal cases as an Expert Witness I have been asked to give an opinion at the early stages of a case as to whether a perpetrator or victim has the capacity to instruct a solicitor, which has been helpful to inform the Courts especially with vulnerable adults who come into contact with the Criminal Justice Services."

As you would expect of such a consummate professional, Dr. Bailham is an Associate Fellow of the British Psychological Society (BPS), a Practitioner Psychologist with the Health & Care Professions Council (HCPC), as well as being a Member of the National Organisation for Treatment of Sexual Abusers (NOTA).



**Below you will find typical examples of the types of cases undertaken by Dr. Bailham in her capacity as an Expert Witness:**

I have been instructed on a number of cases where domestic violence has been an issue in the family, and I have been asked my opinion on a parents' insight into these risks, their ability to protect their children, and the psychological impact on children. In terms of Child and Family Law I am often asked to assess parents where there may be personality difficulties, mental health problems, and/or substance misuse issues. More recently I have been asked to assess parents insight and ability to protect their children from adults with a sex offending history, this could be a parent with a history of this type of offence, or parents who associate with adults with this history.

I am often asked to assess children where the child has a history of sexually harmful behaviour, or young people who come into contact with the Criminal Justice Services for other offences.

With Criminal Law cases I am often instructed to assess vulnerable adults, or children who have been victims of crime; to assess the psychological impact on them, and their ability to instruct a solicitor. At other times I have been instructed to assess young people who come into contact with the Criminal Justice Services in terms of their mental health functioning, the presence of learning disabilities, and capacity to instruct and understand Court proceedings.

**Dr. Dawn Bailham is able to draw on her background in forensic mental health, in which she has assessed and treated adults and children, together with her extensive academic training, to provide a highly professional, independent service as a Consultant Clinical Psychologist & Expert Witness.**

A trained DBT therapist and qualified Cognitive Analytical Therapist (CAT Practitioner), Dr. Bailham has been a qualified Clinical Psychologist now for 14 years, working in a variety of settings dealing with people with complex mental health needs, as Dr. Bailham outlined in a recent interview:

"My experience of working in the NHS within Child and Adolescent Mental Health Services (CAMHS), in Looked after Children's Services, and adult Forensic Mental Health Inpatient Services has given me great insight in mental health issues. The insight and knowledge I have gained I have applied to Child and Family Law cases to gain an understanding of how they impact on parenting capacity, child development, and the emotional wellbeing of children.

Beginning working in forensic mental health has given me great insight into mental health issues within a legal framework and how they contribute to offending in Criminal Law and impact on parenting capacity and insight in family law cases. I feel an important aspect of my role in Expert Witness cases has been sharing psychological formulations to inform the Court, and to assist the Court in making sense of issues regarding parenting, child protection, and the future risk of offending, or victimisation of vulnerable adults and children.

I currently work in a residential care service on a part-time basis with young people aged 16 - 25 years with complex mental health problems and emerging personality disorders. I have recent experience of working with young adults with histories of sexually harmful behaviour some of which have had offending histories. My role involves management, assessment and intervention to address clinical needs e.g. Cognitive Behavioural Therapy, Dialectical Behavior Therapy and Cognitive Analytical Therapy. I also have experience of developing and managing the running of a sex offender treatment programme. Prior to my role working in the forensic inpatient service I worked in an NHS community Child Adolescent and Mental Health Service (CAMHS) delivering DBT to adolescents with histories of self-harm, attempted suicide, and emerging personality disorders, some of which also had offending histories and were known to the Youth Offending Service. I have had previous experiences of developing and managing the delivery of a sex offender.



**Consultant Clinical Psychologist & Expert Witness**

**Mobile Tel: 07801 266 010 / Email: dawnbailhan@icloud.com**